

NATIONAL  
FLATPICKING CHAMPIONSHIP

# WALNUT VALLEY *Festival* WINFIELD, KANSAS

Sept

14-18  
2022

50  
Years



GASS  
JIGJAM  
ANDY MAY  
WEDA SKIRTS  
STILL ON THE HILL  
KELLY HUNT • BING FUTCH  
PRETEND FRIEND • LINDA TILTON  
GREEN FLAMINGOS • 3 TRAILS WEST  
DAVE STAMEY • BARRY PATTON • BRYAN BOWERS  
BENNETT & GURLEY • JOHN MCCUTCHEON  
SHANE HENNESSY • WHISKEY MASH BAND  
TOM CHAPIN & FRIENDS • BEPPE GAMBETTA  
ROZ BROWN & JIM RATT'S • CRARY, EVANS & BARNICK  
DAMN TALL BUILDINGS • MARK ALAN WADE & KYLE BAKER  
SOCKS IN THE FRYING PAN • THE STEEL WHEELS  
TIM O'BRIEN BAND • PEDERSEN, FLYNN & JORGENSEN  
MARLEY'S GHOST • CHRIS JONES & THE NIGHT DRIVERS

**RHONDA VINCENT & THE RAGE**

**BÉLA FLECK MY BLUEGRASS HEART - FEATURING :**  
BILLY CONTRERAS, SIERRA HULL, JUSTIN MOSES, SHAUN RICHARDSON, MARK SCHATZ

Cague  
2022

WALNUT VALLEY FESTIVAL, WINFIELD, KS. 620-221-3250 WVFEST.COM



## <sup>2</sup> Our 50th Walnut Valley Festival Is Almost Here!

Welcome to the second iteration of our E-Occasional. Just like the first issue, the online format has allowed us to add some additional features to our usual news about our schedule, performers and other things connected to our 50th [WALNUT VALLEY FESTIVAL](#).



I capitalized that because many of us have become inured to the fact that this year is WVF 50. Every once in a while, though, it really hits us what an important milestone this is. We have some really cool things to mark the milestone, including a new book written by emcee and Winfield author Seth Bate. Ken Gale has written *Winfield a Bluegrass Musical* and Southwestern College in Winfield is going to debut it right before festival begins. On Sunday, September 11, they will have a matinee showing that will be free to festival goers.

Of course, we have also put together an artist lineup befitting the occasion. Unless you have been living under a rock, you have probably heard of [Béla Fleck and his Bluegrass Heart](#), where he has assembled multi-generational bands to make amazing music together. For Winfield he is bringing [Billy Contreras](#), [Sierra Hull](#), [Justin Moses](#), [Shaun Richardson](#), and [Mark Schatz](#). Making her first appearance at Winfield, we are pleased to welcome the queen of bluegrass, [Rhonda Vincent, and the Rage](#). Both these bands are here for one or two nights only, so be sure and check the schedule so as not to miss them.



The [Tim O'Brien Band](#) will be marking a return to Winfield, as will [Pedersen, Flynn & Jorgenson](#), who have all been at Winfield in different bands but never combined as one. [Chris Jones and the Night Drivers](#) return after a phenomenal year, chalking up seven #1 songs from their album *Make Each Second Count*.

We are pleased to welcome back [3 TRAILS WEST](#), [Stephen Bennett](#) (teamed up with [Bill Gurley](#)), [Bryan Bowers](#), [Roz Brown](#) & [Jim Ratts](#), [Tom Chapin & Friends](#), [Crary, Evans & Barnick](#), [Damn Tall Buildings](#), [Bing Futch](#), [Beppe Gambetta](#), GASS, [Green Flamingos](#), [JigJam](#), [John McCutcheon](#), [Marley's Ghost](#), [Andy May](#), [Barry Patton](#), [Pretend Friend](#), [Socks in the Frying Pan](#), [Dave Stamey](#), [The Steel Wheels](#), [Still on the Hill](#), Linda Tilton, and [Mark Alan Wade](#) & Kyle Baker.



Making his first appearance at Winfield, [Shane Hennessy](#) is a phenomenal Irish finger style guitarist; he will only be here on Thursday, though, so be sure not to miss his sets. [Kelly Hunt](#) is a young banjo player out of KC, whose sets are remarkable for her beautiful lilting voice and memorable, authentic songwriting. We welcome the [Whiskey Mash Band](#), winner of our 2nd Battle of the Bands, to our interior stages, as well as long-time campground favorite, the [Weda Skirts](#).

Just as with our first E-Occasional, the digital format has allowed us to throw in some amazing content for you to check out. Musician, emcee and writer [Orin Friesen](#) has provided an interview with [Béla Fleck](#) that you can listen to, courtesy of Orin's show on [Truckers Radio](#). We have links to entertaining episodes of Chapman's Music Shoppe's series, and [Chapmans](#) will be on grounds this year doing interviews with our artists, and providing musical necessities and accessories in their [The Acoustic Shoppe](#) booth.

I'm sure you are going to want to check out our camping updates; most things will stay the same, and we will again have an online Land Rush preregistration July 1-10. We will have an expanded beer and wine tent in the interior, now dubbed the Stage One Speakeasy. [Feisty Music Camp](#) for Kids will return, and is now free for all participants; show up early, though, if you want to get a good seat. In an attempt to cut down on traffic and congestion in the campgrounds, we are charging \$10 for all golf carts brought on to festival grounds. We understand that many campers depend on the golf carts for mobility, but we also need to address the increasingly crowded roads and camping areas. The ban on unauthorized ATVs/UTVs instituted in 2019 will stay in place.

Aside from the 4 stages with over 200 hours of music, we'll have [8 instrument championships](#), a [Songwriters Showcase](#), [Andy May's Acoustic Kids](#), [Wednesday Workshops](#), a juried [Arts and Crafts fair](#), and some great new, as well as traditional, food vendors. We look forward to welcoming you back to Winfield, as we celebrate 50 Years of the Walnut Valley Festival!

Bart Redford  
Executive Director



### Camping Preregistration

3

(MUST BE POSTMARKED JUNE 28—JULY 9)

Forms postmarked before June 28 will be returned

Name: \_\_\_\_\_ Phone: \_\_\_\_\_

Address: \_\_\_\_\_ City: \_\_\_\_\_ State: \_\_\_\_\_ Zip: \_\_\_\_\_

Email: \_\_\_\_\_ \*WILL NOT BE PROCESSED BEFORE 1PM ON JULY 1\*

**Campground:** (Circle One) **W** (West) **P** (Pecan)  
\_\_\_\_\_ Rough Camp (No Electric) Sept. 3—17 (15 Days) \$225**Unit #1: PERMIT USER'S NAME** \_\_\_\_\_**City & State:** \_\_\_\_\_**Phone:** \_\_\_\_\_**Campground:** (Circle One) **W** (West) **P** (Pecan)  
\_\_\_\_\_ Rough Camp (No Electric) Sept. 3—17 (15 Days) \$225**Unit #2: PERMIT USER'S NAME** \_\_\_\_\_**City & State:** \_\_\_\_\_**Phone:** \_\_\_\_\_

Send Order Form &amp; Payment to: Walnut Valley Association, Inc., P.O. Box 245, Winfield, KS 67156-0245

**Total Enclosed:** \_\_\_\_\_  
**No Refunds****Payment:** Check # \_\_\_\_\_ or Card # \_\_\_\_\_**Signature:** \_\_\_\_\_ **Exp. Date:** \_\_\_\_\_ **Security Code:** \_\_\_\_\_<https://www.wvfest.com/land-rush-instructions/>

## 2022 Preregistration & Lineup Procedures

### WE'VE HEARD YOU

In an attempt to eliminate a trip to Winfield for many of you and reduce your costs associated with the festival, we are eliminating Number Day. That date will now simply designate when WVF fees begin and when the Ticket Trailer starts being open 12 hours a day.

#### PREREGISTRATION: JULY 1 - 10, 2022!

You may preregister for Land Rush by prepaying WVF rough camping fees for 1 camping spot (\$225) or a maximum of 2 (\$450) per transaction. This fee covers 15 days (September 3-17) of camping without electricity. Electricity is not available during preregistration, but will be available to purchase upon arrival to grounds. You may preregister online beginning at 8am on July 1. At the time of preregistration a timestamp will be used to place you in the queue and then assign you to a row, A-F. We will take preregistrations by mail-in forms (postmarked June 28- July 9), but your place in the queue will depend on when we process your order. Completed registrations may also be dropped off at our office (918 Main, Winfield) during regular business hours (M-F: 9:00a-12:00p, 1:00p-5:00p) while preregistration is open. **No registrations from mail-in forms or walk-ins will be processed before 1pm on July 1.**

**After July 31**, you will receive a form (by email if provided, by regular mail for others) notifying you of which row you need to line up in starting August 27, along with more specific instructions for Lineup. This form **MUST** be printed ahead of time and displayed in your vehicle when you arrive on grounds. Be sure to verify that [hq@wvfest.com](mailto:hq@wvfest.com) is on your email's safe sender list to ensure delivery.

#### Please Note

- While preregistering early does improve your chances of being in the first rows, it is not guaranteed. For example, in 2021, Rows A, B, & C were filled in less than 10 minutes.
- To assist with keeping the process running as smoothly as possible upon arrival to grounds, please ensure that all information on the preregistration form is accurate for the person who will be receiving the permit before submitting. WVA may be unable to accommodate repeated requests to update/correct/transfer information.
- Do Not Preregister unless you intend to take part in **BOTH** Lineup **AND** Land Rush.

**If you would like to work for your festival ticket, please complete an application.**



or dial 620-221-7402 to leave a message with your name and phone number.

**WVF Worker Application**

**Festival Rules are in effect when the campgrounds open 7am on Land Rush day.**

No animals are allowed anywhere on the festival grounds including camping areas. Please check our website for boarding your pets. Be sure to call ahead for times and prices etc.



[wvfest.com/camping-alternatives](https://wvfest.com/camping-alternatives)

#### 4 2022 Preregistration & Lineup Procedures cont.

##### **LINEUP: SATURDAY, AUGUST 27, STARTING AT 7AM**

Arrival times will be staggered based on your row. When you receive your Row Assignment form, you will also receive information indicating what time you should arrive and providing additional instructions for Lineup. Your Row Assignment form should be prominently displayed in the windshield of your vehicle when you arrive. Upon entry, campers will be separated into Pecan and West and directed to park in a zone corresponding to their row. This is where you will remain until Land Rush, and you may put down tarps to save your spot. Camping permits and parking stickers will also be available to pick up at this time for any campers who arrive in the vehicle they want them on IF their name is the one on the registration. Note that you must pay camping fees, FOR EACH SPOT, upon arrival through September 2 to City of Winfield, and the receipt copy from your City of Winfield yellow camping envelope should be placed together with your row form on your vehicle(s) or tarp(s) holding your place in line.

If you have not preregistered, you should arrive at 1pm, and enter from the 14th Street entrance to the area behind the Horse Barn. WVA personnel will be present to assist campers in parking.

After parking in zones, ALL campers (preregistered or not) must proceed to the designated pre-pay station in Barn 4 (contest stage) on grounds to pay their City of Winfield camping fees (including electric if hooked up in line) and receive their required Land Rush hang tag. Anyone who did not preregister must also pay their WVF camping fees (again, including electric if already hooked up) at this time. Campers who wish to purchase electric permits, but are NOT hooked up in line, may do so at this time or when they return for Land Rush.

##### **LINEUP CONTINUES THROUGH AUGUST 31**

Those who arrive after the initial lineup, up to and including on August 31, will be directed to park in the Zone corresponding to their assigned Row. After August 31, campers arriving to line up will simply join at the end of the Pecan Grove or West Campground line after paying their City of Winfield **AND** Walnut Valley Camping fees.

##### **TICKET TRAILER OPENS 8AM-NOON: SUNDAY, AUGUST 28- WEDNESDAY, AUGUST 31**

The Walnut Valley Festival Ticket Trailer will be open 4 hours each day from August 28- August 31 to assist campers arriving to get in line. Campers must pay their fees at the Ticket Trailer before being allowed to line up.

##### **WVF RATES BEGIN (FORMERLY NUMBER DAY): SATURDAY, SEPTEMBER 3, 7AM**

♦ Campers are NOT required to be present this day. ♦

Walnut Valley Festival Ticket Trailer opens on grounds 12 hours/day and WVF fees (\$15/day without electric, \$27/day with electric) go into effect. Camping permits and Land Rush hang tags will be available to pick up at the Ticket Trailer for anyone who chose to leave them on hold.

##### **LAND RUSH: THURSDAY, SEPTEMBER 8, STARTING AT 7AM**

Important: If you do not yet have your Land Rush hang tag and/or WVA camping permits, be sure and arrive before Wednesday, September 7 at 5pm in order to receive them.

On Thursday, September 8, at 7am, WVA staff will signal the start of Land Rush allowing campers to proceed, in order, from the staging areas into the West and Pecan Grove campgrounds and claim their spot. All vehicles taking part in Land Rush must have a Land Rush hang tag. Vehicles without a Land Rush hang tag or arriving after we start will proceed to the campgrounds after completion of the Land Rush.

##### **Please Note**

- Those who do not preregister may arrive to get in line and pay fees starting at 1pm on August 27.
- Any camper in line prior to September 3 must pay City of Winfield Fees (\$5/day without electric, \$17/day with electric) upon arrival through September 2.
- **BOTH** City of Winfield **AND** Walnut Valley Festival camping fees must be paid before campers are allowed to get in line.
- Camping permits must be attached in the presence of on-duty Walnut Valley Festival personnel at the time they are received.
- All vehicles must be removed from the Pecan Grove and West Campground by 8am, Tuesday, September 6.
- Everyone taking part in Land Rush should be present at their camper in line by 5am on Land **Rush day**.
- A more detailed description of this process and an FAQ can be found at [www.wvfest.com](http://www.wvfest.com) under CAMPING.



# 2022 Hands On Workshops

These are hands on workshops!

<https://www.wvfest.com/2022-wednesday-workshops/>

5

Bring your instruments, music stands, tuners and prepare yourselves for a class designed to improve your skills. Register Online at [www.wvfest.com/2022-Wednesday-Workshops](http://www.wvfest.com/2022-Wednesday-Workshops) or call the office at 620-221-3250 to sign up with a credit card.

## Aodan Coyne - Traditional Irish Gitar Accompaniment -(DADGAD)

Aodán has a wealth of teaching experience, performing master classes around the world and creating online guitar courses in the DADGAD guitar tuning (<https://www.aodancoyne.com>). In this workshop we will explore DADGAD guitar tuning and Irish music. We will cover jig & reel rhythm techniques, how to open up the guitar neck with major & minor chord progressions in a modal tuning, and how to complement the melody of Irish traditional tunes. Each participant will have the opportunity to ask questions and explore the various techniques of Irish backing. **This Beginner to Intermediate level class will run from 10am to 4pm with a 1 ½ hour break for lunch. The cost is \$75. Maximum of 20 students.**

## Bing Futch - Mountain Dulcimer - The Blues, Dulcimer Style

2016 International Blues Challenge Finalist Bing Futch offers up this fun and fascinating class on playing authentic Mississippi Delta Blues on the mountain dulcimer. Bing won the "Best Guitarist" award in the solo-duo category at the IBC in Memphis while playing the mountain dulcimer and shares the secrets to this beloved folk style in a workshop for all skill levels. Get hands-on experience with shuffle rhythms and barre chords as you learn the basic song patterns while learning how to add hot licks and solos. Come find out just how easy it is to play the blues, dulcimer-style! **All Skill Levels Welcome. Cost is \$40 with the class time 10am to 11:30am. Minimum of 5 participants.**

## Cindy Harris - Autoharp Morning & Afternoon Sessions

Join 2017 International Autoharp Champion and 2019 Mountain Laurel Autoharp Champion Cindy Harris for a full day **Intermediate / Advanced** technique and repertoire workshop. The morning session will start with a review of rhythm including a variety of accompaniment techniques and some work on damping and progress into some repertoire that will allow us to exercise those skills, driving rhythm into the melody. The afternoon session will explore jigs, English dance tunes, American fiddle tunes, and maybe some waltzes, focusing on playing smooth melody lines and utilizing alternate chordings. **Classes will run from 9am to 11:30am and from 1pm until 4pm.** Low intermediate autoharpers who do not yet play melody will benefit from attending the morning session. More advanced autoharpers who already play melody are encouraged to attend the full day program so that we can build on our work in the morning when we venture into more challenging material. **The cost for a full day is \$70. The cost for the Morning session only is \$50. Participants of the afternoon class Must be in the morning class. Minimum of 3 Preregistered Participants per class; Morning Class Maximum of 15 participants. Afternoon Class Maximum of 10 participants.**

## Tim May and Dan Miller - Intermediate/Advanced Flat Pick Guitar

This flatpicking guitar workshop will be for intermediate and advanced players. We will look at how to create solos, using cross-picking, folded scales, harmonized scales and Maybelle Carter style. We'll look at how the masters created solos and use their techniques, from Doc Watson and Dan Crary to Tony Rice to Norman Blake and Clarence White. We'll also provide a method for improvisation using scales and chord tones, including the blues (major blues, minor blues). This is the method we have taught literally hundreds of times touring the country, and by the end of the workshop you will be able to create a solo and improvise on tunes/songs you have never heard. Our method is based on concepts in the eight-volume series 'Flatpicking Essentials'. We will work a little on rhythm and appropriate note choices and ideas for alternating bass, but will do so mainly as a basis for moving into Carter style and Norman Blake's supercharged rhythm/lead combo approach. **This Intermediate/Advanced class is 10am to 4:30pm with 1-1/2 hour lunch break. Cost: \$90 per Participant. Maximum 20 participants.**

## Jim Ratts - Songwriting

The legendary Sam Bush had a hit with my song "Howlin' At The Moon" and has been signing it for twenty years. The Dillards, The Limelites, and The Kingston Trio have all recorded my work multiple times. I have enthusiasm to share and encouragement to give to help someone learn the joys of crafting a song. We'll explore techniques used by some of the great songwriters of our genre, tools that set you free to be creative, and facilitate both your music and poetry. Bring your instrument of choice, though you don't have to play to write songs. Gather your thoughts about songwriting and bring your questions. Come prepared to get creative! **All skill levels are welcome**, however beginners especially will benefit from this class. **Class is 9:30am to 4pm with a 1-1/2 hour break for lunch. Cost is \$80.00.**

## Mark Sganga - Beginner & Intermediate/Advanced Finger Style Guitar

**Intro to Finger Style Guitar - 10am to Noon** We'll cover basic fingerpicking techniques, understanding chord shapes (with an eye towards making them movable) & we'll work on a simple Fingerstyle arrangement. This class is for folks who play guitar, know their basic chords & want to begin exploring fingerstyle. **Cost is \$60 per participant. Minimum of 3 Preregistered Participants; Maximum of 20 Participants**

**Arranging for Finger Style Guitar - 1:30pm to 4pm** We'll take a deep dive into how to structure an arrangement on solo guitar. Utilizing moveable chord shapes to find the best key, various settings for arrangements (moving bass lines, Travis & other fingerpicking to support a melody). We'll touch on counterpoint, or how to make parts that happen at the same time work! This will be an open forum. I'll play for you, & be looking for some of you to demonstrate arrangements you've worked up. Will be looking forward your questions, & coming up with solutions to musical puzzles. This class is for folks who have some experience playing "Fingerstyle" or "solo" guitar arrangements & want to open up their minds & fingers, & improve their arrangements! **This Intermediate / Advanced class cost is \$60 per participant. Minimum of 3 Preregistered Participants ; Maximum of 20 Participants**

## Linda Tilton - Ukulele Morning & Afternoon Sessions

**Let's Get Uke Started! - 9:00 am to Noon.** This course is for beginning ukulele players. We will cover tuning, basic chords, reading tablature, beginning strums and transposing to different keys. Commonly known songs often played at "Winfield" jams will be taught. Both standard & baritone tuned ukuleles are welcome. **Cost is \$60.00. Maximum of 15 participants aged 10 or older.**

**Ukulele Picking & Strumming - 1:30 pm to 4:30 pm.** This course is for ukulele players who already know basic chords and chord progressions. Focus is on fingerpicking, strum patterns and chord melody. Both standard & baritone tuned ukuleles are welcome. **Cost is \$60.00. Maximum of 15 participants aged 10 or older.**

## MARK ALAN WADE - HAMMER DULCIMER

This **Multi-Skill-Level** workshop is designed to offer new and fun techniques of playing to Intermediate and Advanced levels. As a veteran public school music teacher, Mark is experienced in differentiating his instruction to various levels within a class. In fact, he has taught all grades from kindergarten to graduate students! In the morning, we will work on a bit of Music Theory as it informs the ways we can play back-up and predict chords on HD. We'll work on easy ways to back up reels, jigs, and waltzes. BONUS: I'll show you an easy-to-memorize tune to apply what we learn!

In the afternoon session, we will learn clever ways to do variations on your melodies. With just a few tricks, you can play your tunes a little differently each time around— a great skill to have for playing solo or in contests! We are going to use the tune, "Blackberry Blossom," for this, so it may help you to review this tune in advance. If you can't, don't sweat it! Blackberry Blossom is such a fun tune— it works played fast or slowly, like a classical tune. We'll end our day by applying our morning session's back-up techniques to this fun fiddle tune too! To help you keep learning after the workshop is over, Mark will provide videos of the tunes and techniques taught for your review. **Cost is \$90. Minimum of 3 Preregistered participants. Maximum of 30 participants.**



## 2022 Luthiers

The luthiers have stepped up to provide extremely nice instruments to celebrate our 50th festival. Our immense gratitude goes to each and every luthier, their families and their employees for their continuing support of the National Flat-Picking Championships hosted by the Walnut Valley Festival and the promotion of music throughout the world. It is because of these luthiers, WVF has been able to give over \$2.7 million in instruments and prizes over the past 50 years. Please support these luthiers by purchasing your next instrument or any accessories from them.

### **Whippoorwill Acoustics - Luthier's Choice A18, 15-Bar Diatonic**

Columbia City, IN 260-249-5561 [www.whippoorwillacoustics.com](http://www.whippoorwillacoustics.com)

### **d'Aigle Autoharps - Cascade SP 15-bar G-D Diatonic Autoharp**

SeaTac WA 800-630-HARP [www.autoharp.com](http://www.autoharp.com)

### **Huss & Dalton Guitar Company - Winfield Custom Finger Style Guitar**

Staunton, VA 540-887-2313 [www.hussanddalton.com](http://www.hussanddalton.com)

### **Bourgeois Guitars - Custom OMS/C DB Signature Finger Style Guitar**

Lewiston, ME 207-786-0385 [www.bourgeoisguitars.com](http://www.bourgeoisguitars.com)

### **Taylor Guitars - 812ce Guitar**

El Cajon, CA 619-258-1207 [www.taylorguitars.com](http://www.taylorguitars.com)

### **The Dulcimer Shoppe / McSpadden Dulcimers -**

4FHKOA-E Custom Koa, Ebony fretboard and pickup

6FHWWB-E 6-String Walnut Baritone with Ebony fretboard

4SGCC-E Scroll Head Cherry Ginger with Ebony Fretboard

Mountain View, AR 870-269-4313 [www.mcspaddendulcimers.com](http://www.mcspaddendulcimers.com)

### **Collings Guitars - MT A-Style Mandolin**

Austin, TX 512-288-7776 [www.collingsguitars.com](http://www.collingsguitars.com)

### **Beautiful Music Violin Shop -**

Camillo Calligari Violin

Luis and Clark 5-String Carbon Fiber Violin

Jay Haide Special Model a l'ancienne Eurowood

Lawrence, KS 785-856-8755 [www.beautifulmusicviolinship.com](http://www.beautifulmusicviolinship.com)

### **C. F. Martin & Company - HD28 Custom "50th" Guitar**

Nazareth, PA 610-759-2837 [www.martinguitar.com](http://www.martinguitar.com)

### **Preston Thompson Guitars - D-SMA Custom Guitar**

Sisters, OR 541-588-6211 [www.pktguitars.com](http://www.pktguitars.com)

### **Collings Guitars - Austin, TX 512-288-7776**

[www.collingsguitars.com](http://www.collingsguitars.com)

### **Master Works, Inc. - Russell Cook Ultralight Chromatic Extended Range Hammer Dulcimer**

Bennington, OK 580-847-2273 [www.masterworksok.com](http://www.masterworksok.com)

### **Rick Thum Hammer Dulcimers - 17/17 Professional Chromatic Hammer Dulcimer**

Eureka, MO 314-406-0690 [www.rthum.com](http://www.rthum.com)

### **Songbird Dulcimers - Chromatic Pro Hammer Dulcimer**

Muscataine, IA 52761 563-571-5296 [www.songbirdhd.com](http://www.songbirdhd.com)

### **OME Banjos - Ikon Megatone Banjo**

Boulder, CO 303-449-0041 [www.omebanjos.com](http://www.omebanjos.com)

### **Deering Banjo Company - Deering Calico Banjo and**

**Deering White Lotus Banjo**

Spring Valley, CA 800-845-7791 [www.deeringbanjos.com](http://www.deeringbanjos.com)

**To Register for one  
or more contests,  
Click on this Link**

[https://www.wvfest.com/  
register/](https://www.wvfest.com/register/)

**OR**

**Call  
620-221-3250  
to register with a  
credit card**

**See the  
2022  
Contest Rules  
at**

[https://www.wvfest.  
com/2022-contest-rules/](https://www.wvfest.com/2022-contest-rules/)

Be sure to check out the 2022  
Luthiers and Prizes page on our  
website to get a complete list of prizes

[https://www.wvfest.com/  
luthiers-and-prizes](https://www.wvfest.com/luthiers-and-prizes)

# 2022 Camping Info

For Details and additional camping information go to 7

[www.wvfest.com/lcamp-rules](http://www.wvfest.com/lcamp-rules)

**Saving & Sharing Spaces** Camping spaces can be saved by paying camping fees and marking the space with a WVA camping stake; one stake per camping space. Stakes will be available after 11am on Thurs., Sept. 8. Please keep your campsite as small and compact as possible. Consider inviting newcomers to join your site. Campground pickin' and jammin' have long been valued features of the Walnut Valley Festival, but space is limited. Please consider your neighbors, who have been at their established camps for years and do not want to be displaced or crowded out.

**Campground Stages** Anyone wishing to establish themselves as a "recognized" campground stage with a stage and/or amplified sound system needs written authorization from WVA.

Only Full-Festival ticket holder will be allowed on grounds prior to Thursday, Sept. 14.  
Festival Gates and Campgrounds will open Thursday, Sept. 8 at 7am.

## 2022 FACILITIES INFORMATION

- Security Personnel on grounds 24 hours from Land Rush
- All camping/parking in campgrounds \$15 per day per vehicle (includes one camping permit if camping) Extra camping permits \$15 per day per unit. Extra Vehicle permits \$12 per extra vehicle from Sept. 8 thru Sept. 17
- Electric hookups \$12 per day; over 1,000 available, first-come, first-serve basis
- Vehicle stickers must be permanently attached to windshield to be in campgrounds or vehicle may be towed – at owners expense
- Over twenty food concessions on grounds
- All weather facilities; woodchips are available.
- List of nearby motels, campgrounds & boarding kennels can be found on WVA website:  
[www.wvfest.com](http://www.wvfest.com)

**Fairgrounds Access & Tickets** Festival grounds will open on Thursday, Sept. 8, at 7am. Wristbands must be worn or passes must be on your person at all times while you are on grounds as of 5pm Sept. 8. Persons without wristbands or approved ID cannot visit or camp.

**Fees and Permit Stickers** Campsites and electric hook-ups available on first-come, first-serve basis. Large shelters, tarps, tents, etc. require additional permits. Full camping fees must be paid for all nights on grounds, sold from day entering through Sat., Sept. 17. Electric fee pays for ONE electric cord.

**Camping, Electrical, Golf Cart fees may be paid with check, cash or credit cards.**

**\$10 fee will be charged for all Golf Carts brought onto grounds.**

**Authorized Vehicles** No unauthorized vehicle (including bicycles) allowed in the interior. Bicycles must have headlights on the front and red reflectors on the rear if used at night. Drivers of golf carts must be 18 years old with valid driver's license; owners shall provide proof of liability. Please drive on the right side of the streets/roads on the fairgrounds, and drive slowly and safely. Golf carts are allowed on the fairgrounds but not on Winfield city streets. If used at night carts **MUST** have a headlight with a beam projecting out 25 feet **AND** a rear facing red marker light for safety. Flashlights, low output LED's and closet lights are **Not** acceptable as lights. Riders are limited to the seats on the carts.

**No unauthorized gas or electric powered ATVs/UTVs** will be allowed on grounds during festival. Authorized ATVs/UTVs include those operated by WVA, Security, Vendors, and local Emergency Personnel.

**Parking** Only Full Festival and Two-Day ticket holders can purchase parking or park vehicles in the campgrounds. Free Long-term parking is available in designated areas. Single-Day ticket holders may park in Day Parking.

## Order Tickets Online

**TICKETS: Mail / Phone Order Form (MUST be RECEIVED by Aug. 24,)**

Name \_\_\_\_\_ Phone \_\_\_\_\_

Address \_\_\_\_\_ City \_\_\_\_\_ State \_\_\_\_\_ Zip \_\_\_\_\_

Email \_\_\_\_\_ Number of Years Attended? \_\_\_\_\_

| Tickets               | Qty   | Advance | Gate  |       |
|-----------------------|-------|---------|-------|-------|
| Full Festival         | _____ | \$100   | _____ | \$125 |
| 2-Day Fri / Sat       | _____ | \$90    | _____ | \$100 |
| 2-Day Sat / Sun       | _____ | \$80    | _____ | \$90  |
| Friday Only*          | _____ | \$60    | _____ | \$70  |
| Saturday Only*        | _____ | \$60    | _____ | \$70  |
| Thursday* (gate only) | n/a   |         | n/a   | \$65  |
| Sunday* (gate only)   | n/a   |         | n/a   | \$20  |

**TOTAL \$** \_\_\_\_\_

Send order form, payment, and self-addressed, stamped envelope to:

**Walnut Valley Association**  
P.O. Box 245  
Winfield, KS 67156  
620-221-3250



**There are NO REFUNDS; \$35 will be charged for returned checks**

Payment by: Check # \_\_\_\_\_ Visa \_\_\_\_\_ MasterCard \_\_\_\_\_ Discover \_\_\_\_\_

Cardholder Signature \_\_\_\_\_

Card # \_\_\_\_\_

3 or 4 Digit Security Code \_\_\_\_\_ Exp. Date \_\_\_\_\_ / \_\_\_\_\_

\* Daily Ticket Prices Good from 6am to midnight

\*\* Children ages 6 to 11; \$10 each; pay at gate only - incl. Feisty Kids Camp

\*\* Children ages 5 and under admitted free with paid adult

**Advance Tickets** available at the **WVA Office** and **Ticket Trailer** until 5pm Friday, Sept 9

\*\*\* No phone or mail-in orders received after Aug 24 \*\*\*

**Detailed Festival Schedule Coming Soon!**



**Detailed Festival Schedule Coming Soon!**



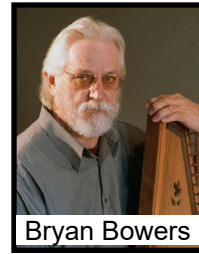
3 TRAILS WEST



Damn Tall Buildings



Roz Brown & Jim Ratts



Bryan Bowers



Bing Futch



The Cowboy Way



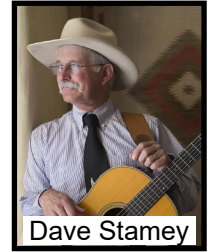
Linda Tilton



Crary, Evans & Barnick



Tom Chapin & Friends



Dave Stamey



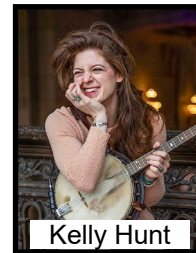
John McCutcheon



Barry Patton



GASS



Kelly Hunt



Beppe Gambetta



JigJam



Mark Alan Wade & Kyle Baker



Still on the Hill



Chris Jones & the Night Drivers



Socks in the Frying Pan



Shane Hennessy



Marley's Ghost



Tim O'Brien Band



Whiskey Mash Band



The Steel Wheels



Weda Skirts



Green Flamingos



Pretend Friend

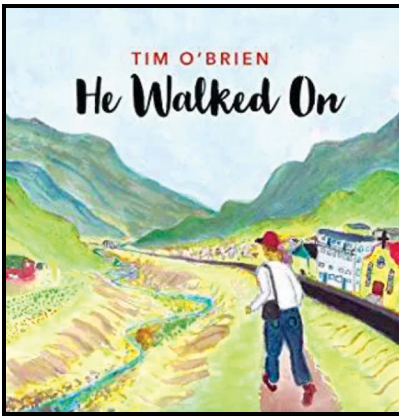


Pedersen, Flynn & Jorgenson



Bennett & Gurley





**Tim O'Brien**

***He Walked On***

**Howdy Skies  
Records, 2021**

Many of us first heard Tim O'Brien in 1979 when the Colorado bluegrass band, Hot Rize, first came to Winfield in 1979. O'Brien was the lead singer and also played mandolin, fiddle, guitar, and octave mandolin. Hot Rize quickly became a Walnut Valley Festival favorite and returned to the festival seven more times before they decided to disband 1990, the same year they won the IBMA's first Entertainer of the Year Award. Tim O'Brien returned to Winfield in 1993, as a duo with his sister, Mollie. During the '90s, he performed at the festival several times, including with his band, the O'Boys, and as a duo with Darrell Scott. It's only fitting that this legendary performer is part of the festival that is celebrating its 50th year.

It would be an understatement to say that Tim O'Brien is a fine singer, musician, and entertainer. He is all that and more, but it is his songwriting that is the proverbial icing on the cake. The new album, *He Walked On* proves that. First of all, there is not a weak track in this collection. Some of the songs address social or historical issues and some, like "Nervous," address personal issues, but in a lighthearted way. The album opens with "When You Pray (Move Your Feet)" which is a tribute to the late John Lewis, US Representative and Civil Rights activist. The title comes from a West African proverb that Lewis quoted in his book, *Across that Bridge*. That song will make you want to tap your feet and clap along, while you, hopefully, take its message to heart.

"Can You See Me, Sister?" is an interesting, though somewhat sad song. It's the story of Thomas Jefferson's son, Madison, from Jefferson's relationship with his slave, Sally Hemings. "Five Miles In and One Mile Down" is the story of a coal mine disaster. Being a native of West Virginia, Tim O'Brien is very familiar with this subject. Over 2600 miners have been killed in mine disasters since the 1880s. To those of us less aware of the situation, this might seem like ancient history, but the most recent West Virginia coal mine disaster took place in 2010.

Not only are the songs great, the supporting musicians are superb. Among the more-recognizable names are Justin Moses, Mike Bub, Edgar Meyer, Chris Scruggs and, of course Tim's wife, Jan Fabricius. It's hard for me to pick favorite tracks on this album but, as a fan of bluegrass music, I really like "Sod Buster" and "See You at the Funeral." An issue to which all of us can relate is addressed in the song, "Pushing on Buttons (Staring at Screens.)" Perhaps one of the best remedies for that is attending live music events, such as the one you are attending right now. But don't stop there. March over to the merchandise table following one of Tim's sets and get your own copy of *He Walked On*. I promise that you won't be disappointed.

Orin Friesen



**Chris Jones  
& The  
Night Drivers**

***Make Each  
Second Last***

**Mountain Home  
Music Company,  
2021**

I first met Chris Jones in Wichita sometime in the early 1980s, when he was playing

guitar and singing lead in the Chicago bluegrass band, Special Consensus. I was so taken by Chris' singing and friendly personality, that I continued to follow his career through bands like Whetstone Run, the Lynn Morris Band, Weary Hearts and others. I always thought that Chris would be a perfect singer in Ralph Stanley's Clinch Mountain Boys, doing the Carter Stanley parts, the way Larry Sparks, Keith Whitley, Roy Lee Centers, and Charlie Sizemore (to name a few) did. I once mentioned that to Chris, and he explained that Ralph always hired guys from the South. Chris happens to be from Brooklyn, New York.

Jones began releasing solo projects in 1995, and started his own band, the Night Drivers around that same time. He soon became known, not only for his great singing, but for his tasty songwriting. He also had the knack for finding musicians for his Night Drivers who fit perfectly into the mix. Now it's 2022 and many albums later and Chris Jones & the Night Drivers have released *Make Each Second Last*, which may be their best one yet. When I told my wife that I was planning to write a review of the new Chris Jones album, she said, "That'll be easy. Just write 'It's really good!'" I told her that she was absolutely correct, but I needed to fill up more space. If you've already heard the album, you don't need any comments from me telling how good it is. The chart action from *Bluegrass Today* confirms that. Sometimes a really good album will land two or three songs at #1 on the Bluegrass chart. *Make Each Second Last* has yielded SEVEN #1 songs! Among those songs are "We Needed This Ride," "Whither You Roam," "Bed of Snow," and four more, all written or co-written by Jones. If I had to pick a favorite, it would be "Riding the Chief," a swinging bluegrass song about riding the BNSF train from Chicago to Albuquerque. I've "ridden the Chief" myself, so I can appreciate Chris' sentiments.

If you happen to listen to *Bluegrass Junction* on Sirius/XM, you've probably heard most of the songs on this album, so I won't go into details on all the songs. Suffice it to say that every one of them is good. Even though Chris Jones is one of the main announcers on that satellite radio channel, I doubt that he programmed any of his songs. That was likely done by Kyle Cantrell, who also knows good Bluegrass when he hears it. Credit wouldn't be complete without mentioning the contributions of the other Night Drivers, Mark Stoffel on mandolin, Grace van't Hof on banjo, ukulele, and accordion, and Marshall Wilborn on bass. All three are excellent musicians and harmony vocalists as well. If Chris Jones decided to stop recording right now, he would be quitting at the top of his game. However, I certainly don't expect that to happen. If *Make Each Second Last* is any indication of where Chris Jones & the Night Drivers are headed, the best may be yet to come.

Orin Friesen

## DAYS OF PERFORMANCE

*This schedule went to press June 27, 2022. We will follow it closely, however, there will be changes*

|   |   |
|---|---|
| 3 TRAILS WEST.....Th, Fr, Sa,                     | Marley's Ghost.....Th, Fr, Sa,                |
| Bennett & Gurley.....Th, Fr, Sa, Su               | Andy May.....Th, Fr, Sa,                      |
| Bryan Bowers.....Th, Fr, Sa,                      | John McCutcheon.....Fr, Sa                    |
| Roz Brown & Jim Ratts.....Th, Fr, Sa, Su          | Tim O'Brien Band.....Fr, Sa                   |
| Tom Chapin & Friends.....Fr, Sa,                  | Barry Patton.....Th, Fr, Sa                   |
| Crary, Evans & Barnick.....Th, Fr, Sa             | Pedersen, Flynn &<br>Jorgenson.....Fr, Sa     |
| Damn Tall Buildings.....Th, Fr, Sa                | Pretend Friend.....Th, Fr, Sa                 |
| Bélla Fleck<br>My Bluegrass Heart.....Sa          | Socks in the Frying Pan.....Th, Fr, Sa        |
| Bing Futch.....Th, Fr, Sa, Su                     | Dave Stamey.....Th, Fr, Sa,                   |
| Beppe Gambetta.....Th, Fr, Sa, Su                 | The Steel Wheels.....Th, Fr                   |
| GASS.....Su                                       | Still on the Hill.....Th, Fr, Sa, Su          |
| Green Flamingos.....Th, Fr, Sa, Su                | Linda Tilton.....Th, Fr, Sa, Su               |
| Shane Hennessey.....Th,                           | Rhonda Vincent & The Rage Th, Fr              |
| Kelly Hunt.....Th, Fri                            | Mark Alan Wade &<br>Kyle Baker.....Th, Fr, Sa |
| JigJam.....Th, Fr, Sa, Su                         | Weda Skirts.....Th, Fr                        |
| Chris Jones &<br>The Night Drivers.....Th, Fr, Sa | Whiskey Mash Band.....Sa, Su                  |

## Join us for the 13<sup>th</sup> Annual Champion Showcase Concert Wednesday, Sept. 14, 7:00 pm on Stage III

Ken



Benjamin



Four of the 2021 Champions are eager to entertain you with musical styles sure to please.

**Ken Shoemaker,  
Jesse Smith,  
Jason Shaw and  
Benjamin Barker**

Jason



Jesse



are ready to show their chops to the world! Bring your lawn chairs and your friends and enjoy the fun!

**Full Festival Wristbands Only**





# FEISTY MUSIC CAMP

12

Walnut Valley Festival has a spectacular third annual Feisty Music Camp for Kids to celebrate our 50th Festival. [Erin Mae](#) and [Aaron Fowler](#) have been working all year to have special music oriented activities just for kids. There will be petting zoos and special appearances and crafts and workshops all related to music and all designed to get your kids hopping.



Be sure to schedule your time on Friday and Saturday afternoon. The camp welcomes kids from pre-school through 6th Grade. Each session will have a theme or focus, and some sessions may be split to give kids a chance to choose which activity they want to do. Located at Stage 6 in the West Campground on Friday Sept 16 from 1pm to 4:30pm and Saturday, Sept 17 from 1pm to 4pm.



Plan on coming Early, and Parents, You get to enjoy the fun too because kids must be accompanied by a responsible adult who is a kid at heart. Click on the link for more details.



[www.wvfest.com/kids-music-camp/](http://www.wvfest.com/kids-music-camp/)

## NewSong Showcase



The NewSong Showcases will be held Thursday, Sept 15 on Stage II and Saturday, Sept 17 on Stage III. The best original songs will be selected for this showcase by a panel of judges with the help of performer [Chris Jones](#). Songs may be performed solo or with friends.

***These are not contests.***

Being in the showcase IS the prize.

Catagories include Songs about Winfield, Sweet Memories, Love Songs, Songs for a Better World, Feelin' Blue, Religion or Spirit, Songs for Children, Humorous Songs, Instrumentals or None of the Above.

Register Online or Entry forms, lyric sheets and a copy of the song / CD **must be received** at the Walnut Valley Office **by August 1**.

[www.wvfest.com/newsong-showcase](http://www.wvfest.com/newsong-showcase)

## Acoustic Kids 2022

[Andy May's Acoustic Kids™](#)

Showcases have been at the Walnut Valley Festival since 1991. The program encourages hundreds of talented young performers and has launched a few careers! It's covered



internationally in the press, studied as a model by other festivals, and is a Walnut Valley festival tradition.

**These are NON-Competitive Opportunities** for young pickers and singers, beginner to pro, to perform on the festival stage for a welcoming and loyal audience. Details and Applications are **due August 15** and can be found at the link.

[www.wvfest.com/events/acoustic-kids](http://www.wvfest.com/events/acoustic-kids)





Bela Fleck  
My Bluegrass Heart



Rhonda Vincent  
and the Rage

## An Interview with Béla Fleck

Get to know Béla a little better and discover how he came to create the sensational *My Bluegrass Heart*. Walnut Valley Festival emcee and contributor, Orin Freisen, had the opportunity to spend some time with Béla Fleck and shared this interview.

Click here to listen to the entire interview  
<https://youtu.be/YN4qbJALhJ4>

## The Queen of Bluegrass

The fun begins before the music when Rhonda Vincent stops in at The Acoustic Shoppe in Springfield, Missouri to visit with the Chapman Family.

Watch the interview and see why Rhonda earned her title as queen.

<https://youtu.be/dlFFuOgpKBw>

Checkout who will be showing in the  
2022  
**Paulette Rush Arts & Crafts Show**

License Plate Frame

## New Merchandise

## Available Now

Drawstring Backpack

4" Decal

Pick Pouch

Walnut Valley Land Rush Board Game

<https://www.wvfest.com/shop/>

50th Anniversary Poster

Visit the WVF Mercantile at the festival for all your 50th Anniversary commemorative merchandise!

WVF Book by Seth Bate

4" Decal

Collector Coin

**AND MORE TO COME...**

\*50th Anniversary items not available before festival\*